



# ETG EDUCATION MANUFACTURING SECTOR



# ETG EDUCATION MANUFACTURING SECTOR

## ETG ARE YOUR EDUCATION SUPPLY CHAIN PARTNER

ETG places a huge emphasis on the education sector, supporting everything from schools, colleges and technical training academies to universities and research institutions. With our engineering superheroes working closely with academia on all levels, ETG recognises the importance of training and nurturing the engineers of tomorrow.

As well as actively employing and training our apprentices through our extensive education programme, our relationship with training academies and colleges is second to none. We supply technology to academia at all levels and simultaneously, the technology and training we provide ranges from user-friendly standardised machine tools to multi-axis technology that supports research facilities and OEMs that have bespoke training requirements.





## AXILE

AXILE provides the education sector with machines that can do everything from simple to complex parts in one-off to volume production. AXILE is an industry-leading solution with its brand of agile and smart 5-axis vertical machining centres, mill/turn and large bed double-gantry machining centres that can be supplied with AXILE's proprietary ART™ intelligent monitoring system.

AXILE is the brand for educational establishments if you are looking for machines with nimble and agile kinematics that combine with power, rigidity and speed – AXILE delivers the perfect combination for the education sector.



## CHIRON

As a world leader in machine tool solutions that guarantee high precision, maximum process capability and minimum unit costs, a technology from Chiron gives learners an understanding of what is truly possible with a machine tool. The world's leading manufacturers in all technology sectors are embracing everything Chiron has to offer - from methods for manufacturing simple parts faster to turnkey solutions that can manufacture the most complex components as efficiently as possible.

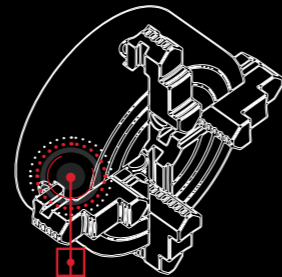
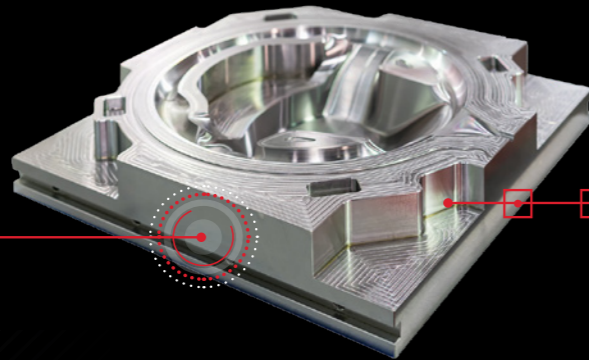
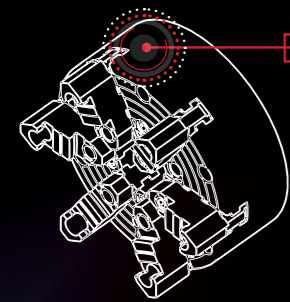
The technology from Chiron combined with the innovative machine concepts and kinematics, make the Chiron brand a remarkable foundation for learning and understanding advanced machining methodologies.

Whether its simple components for the medical, automotive, aerospace supply chain or parts with remarkable complexity and cycle time constraints – the Chiron brand continues to break new ground and this is fundamental to higher-level education and research institutions, which are just two niche areas in the education sector where you will find these machines.

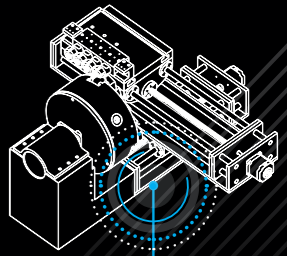
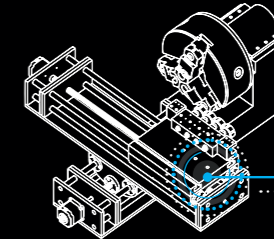
**CHIRON Group**  
**AXILE**  
agile smart machining

**QUASER**  
Group

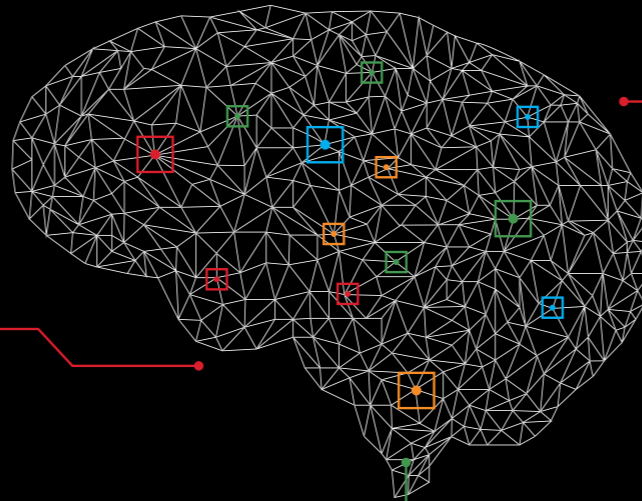
Milling



EDM



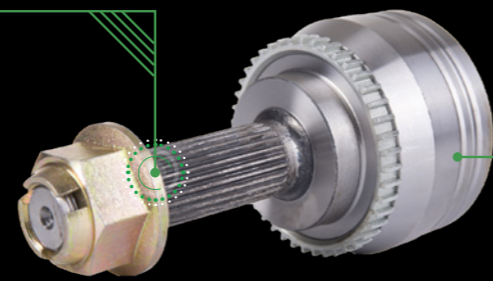
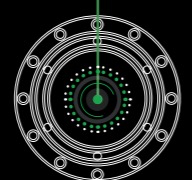
 **MITSUBISHI**  
**ELECTRIC**  
*Changes for the Better*



CAD/CAM Solutions for Manufacturing

 **Nakamura-Tome**

Turning



**Mastercam**

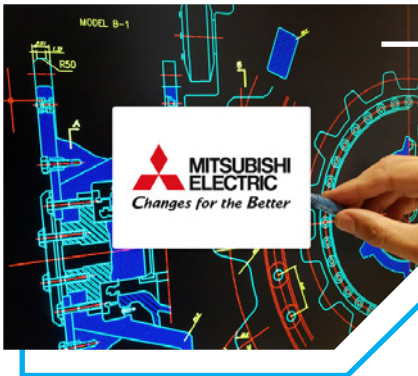
# EDUCATION PRODUCTION



## NAKAMURA TOME

When it comes to turning technology, there is very little you cannot learn from a Nakamura-Tome machine. As the world leader in the design and manufacture of single-process, multi-tasking turning and mill/turning machines, Nakamura has established a reputation beyond reproach. The Japanese brand that is available from ETG utilises the most innovative technologies in its high-precision CNC turning centres. The result is a machine tool solution that can manufacture components for any industry at a speed, precision and quality level that stretches far beyond that of other brands.

This technology is recognised by safety-critical industries such as the automotive, aerospace and medical industries - and the education industry is no different. Wherever there is a need for simple or complex components – you are likely to find a Nakamura machine at the sharp end, making the parts that keep the industry turning. This is why the brand is so instrumental in the education market, it gives learners of all competence levels a foundation for advancing their technical prowess.



## MITSUBISHI EDM

Mitsubishi EDM technology has been the 'go-to' name in the industry for more than a generation. Whether it is small workshops, the subcontract supply chain or the OEM manufacturers, Mitsubishi Electric Die-sinking EDMs, Wire-cut EDMs and fine-hole EDMs from ETG enhance productivity with high speed and a level of accuracy that makes work easier for both the first-timer and long-term users of this technology when handling everything from simple to complicated shapes. This is why the world of academia turns to the industry's leading brand.

Mitsubishi EDM machines can be found throughout the entire manufacturing supply chain and as technology evolves to new processes and material types, EDM technology has never proven so relevant or popular. It is the continual growth of EDM along with the technology and intuitive user interface on the Mitsubishi machines that make them the choice for academia.

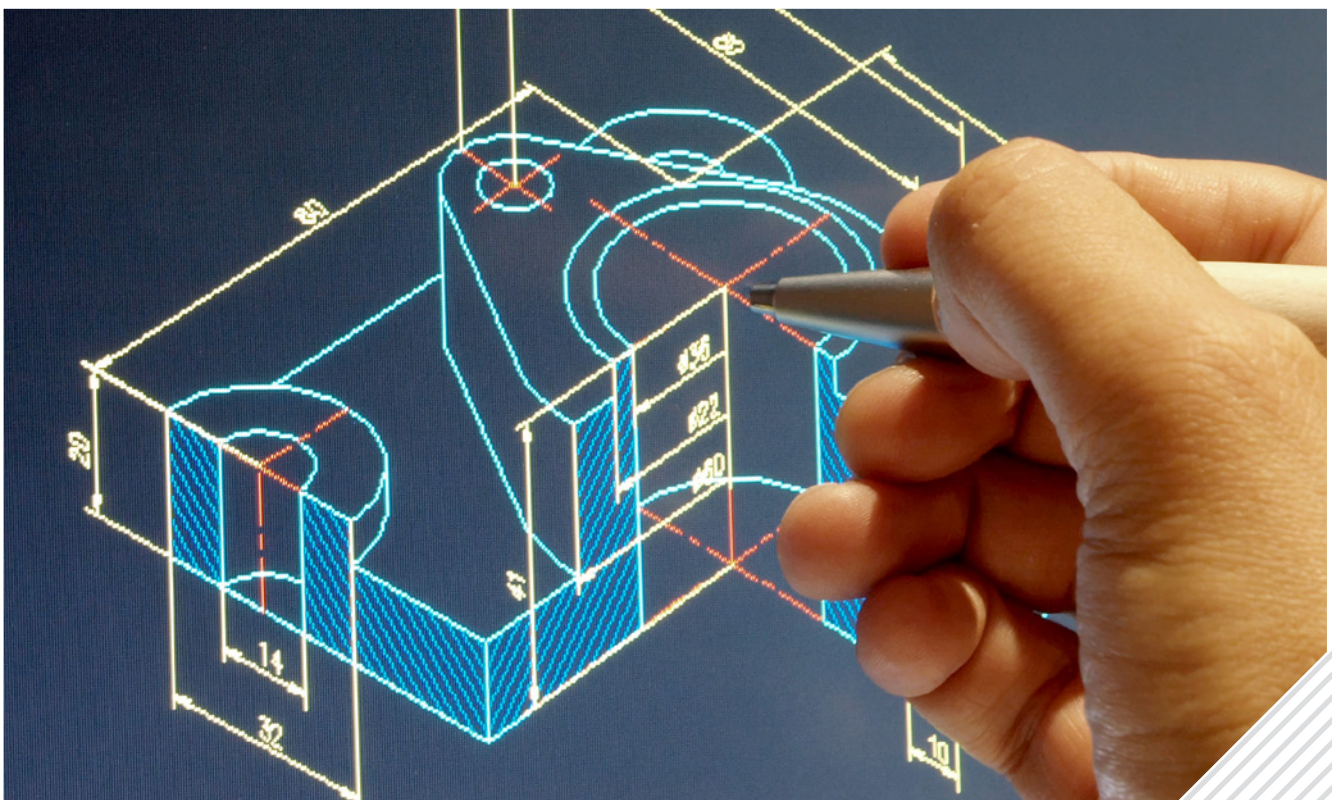


## QUASER

Quaser is a machine tool brand of impeccable quality and performance that is perfect for the education sector. Quaser is one of the biggest manufacturers of CNC machining centres worldwide and as such, its expertise is unparalleled. Quaser has an extensive range of products to fulfil several metal-cutting demands. This starts with 3 and 4-axis vertical and horizontal machining centres through to 5-axis machines, multi-tasking technology like mill/turn machines as well as value-added flexible manufacturing cells that can be implemented in lights-out production or for robotic applications.

# CONTACT ETG - THE EDUCATION PRODUCTION, MACHINE TOOL SPECIALISTS

If you are a cutting tool manufacturer, or a company involved in education manufacturing for the mould-making sector, ETG's principals will have a solution for your component manufacture. Please call 01926 818 418 to find out more or contact us via email.





# Making Engineers Champions...

+44 (0)1926 818 418



engtechgroup.com



sales@engtechgroup.com



## THE ENGINEERING TECHNOLOGY GROUP

Wellesbourne Distribution Park, Unit 16  
Loxley Road, Wellesbourne, Warwickshire, CV35 9JY

+353 (0)45 435457



etgireland.ie



salesireland@engtechgroup.com



## THE ENGINEERING TECHNOLOGY GROUP - IRELAND

Unit 17, Newbridge Industrial Estate  
Athgarvan Rd, Newbridge, Co. Kildare, Ireland

+44 (0)24 7699 3153



hyfore.com



sales@hyfore.com



## HYFORE WORKHOLDING

Unit 3, 67 Blackhorse Road,  
Longford, Coventry, CV6 6DP